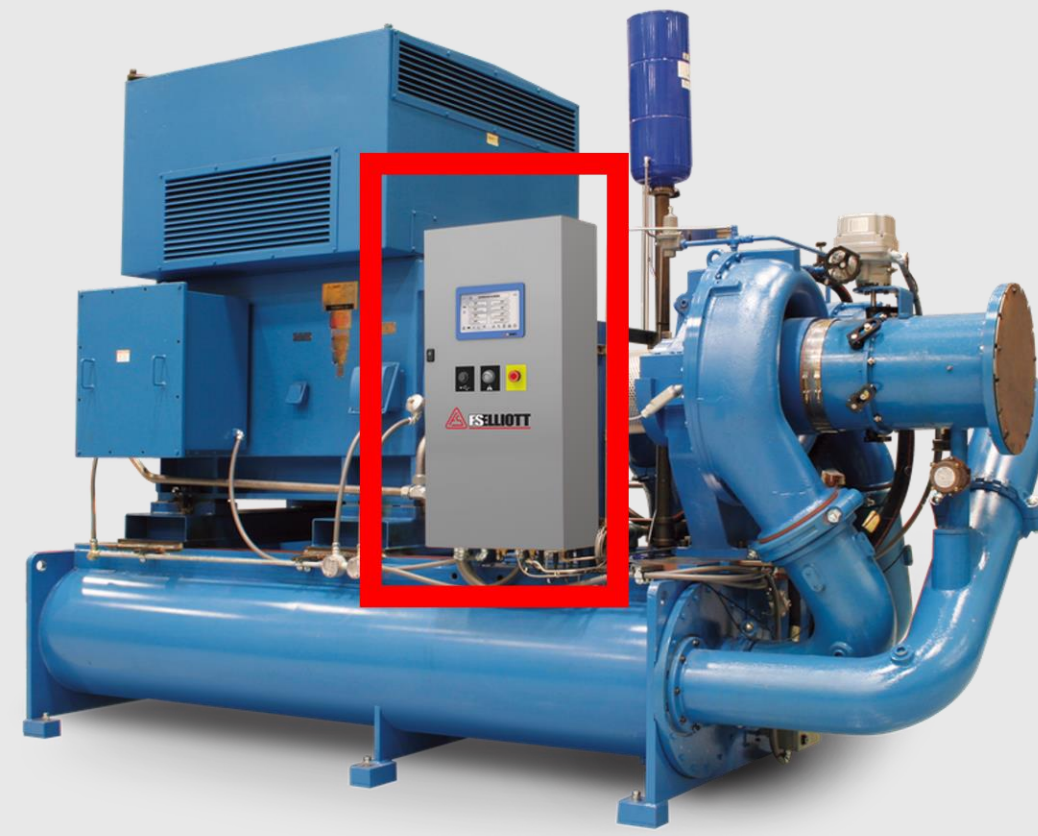


Industrial Compressor Simulator

Carter Deliere, Peter Reynolds, Christian Wiseman, Adam Steinmetz
 Advisors: Dr. Peter Hill, GCC; Ed Klimek, Fellow Engineer, FS Elliott

Goal: Develop a digital simulator that tests the FS Elliott's R1000/R2000 compressor control system

- Validate controller response to events, including load sharing and fault response
- Small form factor, configurable, expandable



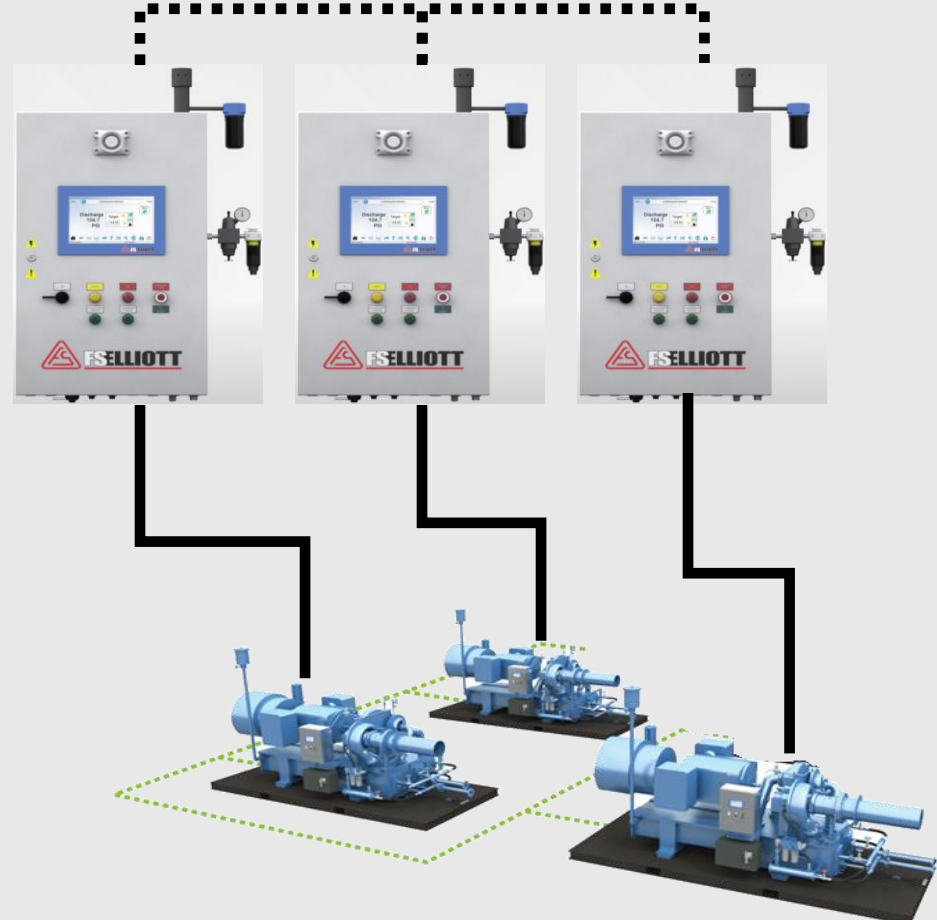
R1000 Compressor Controller



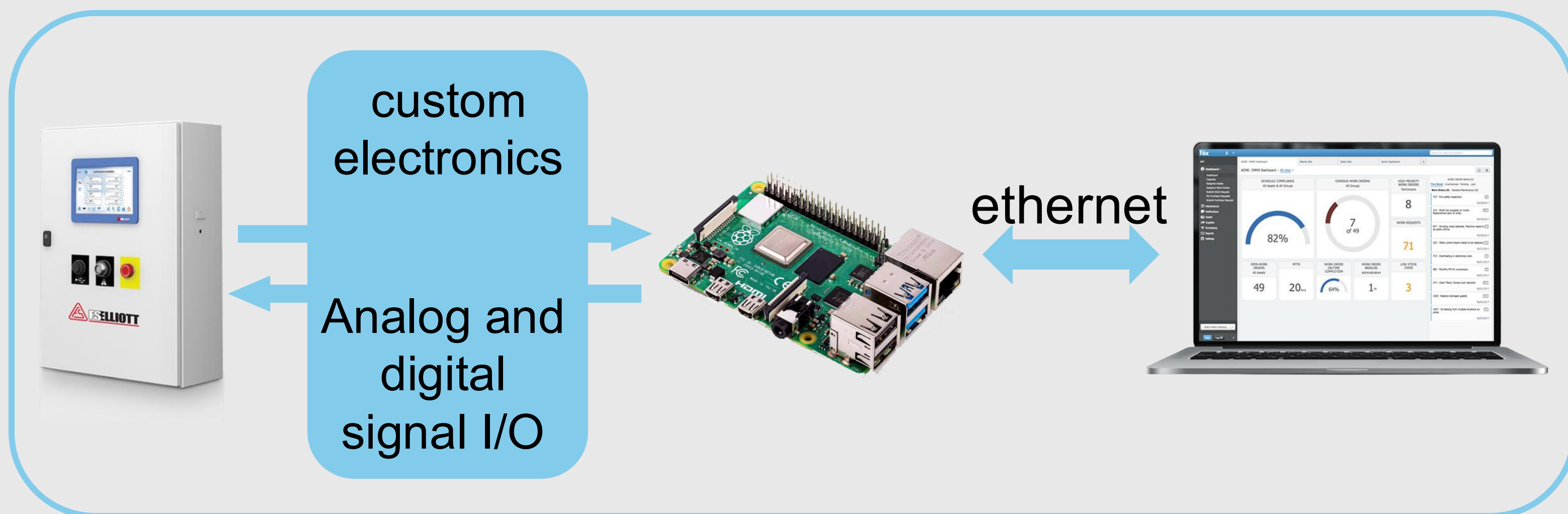
Existing simulator: Large analog switchboard

Expandable

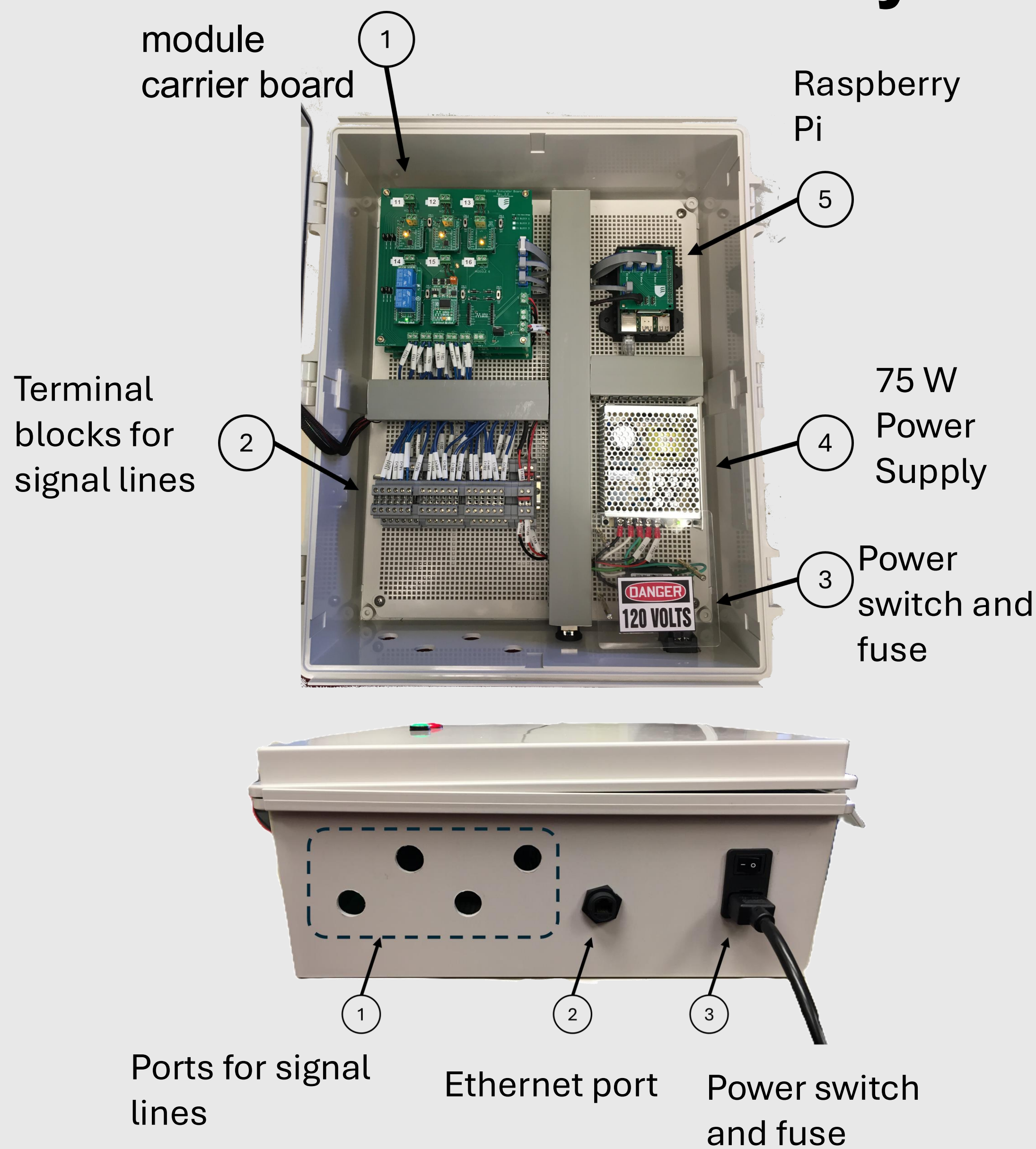
Supports up to 3 compressors for ICS tests



Simulator Architecture

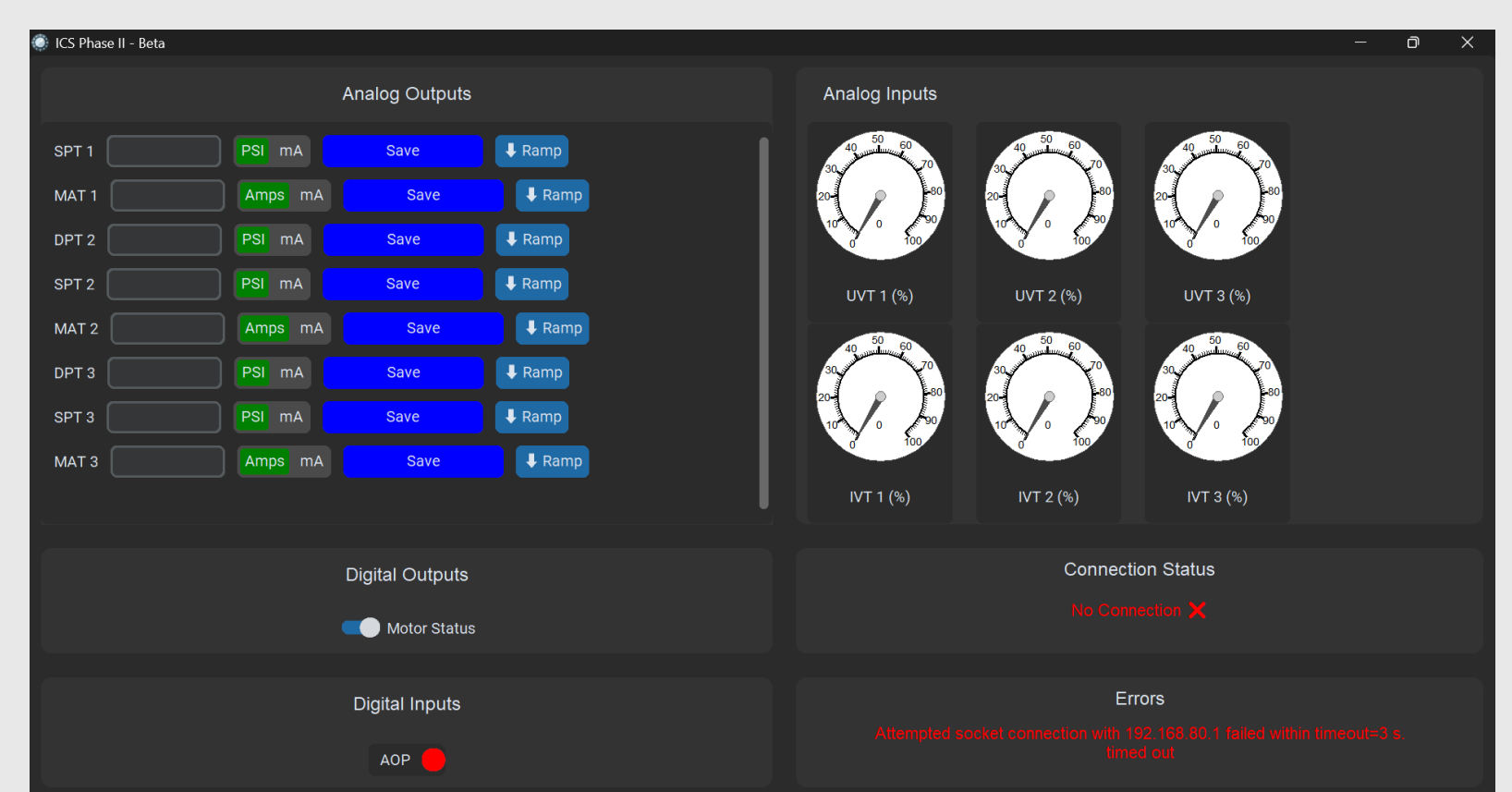


Enclosure and Panel Layout



Successfully field tested at FS-Elliott's Facility

User Interface



Supports up to 18 interchangeable signal modules

